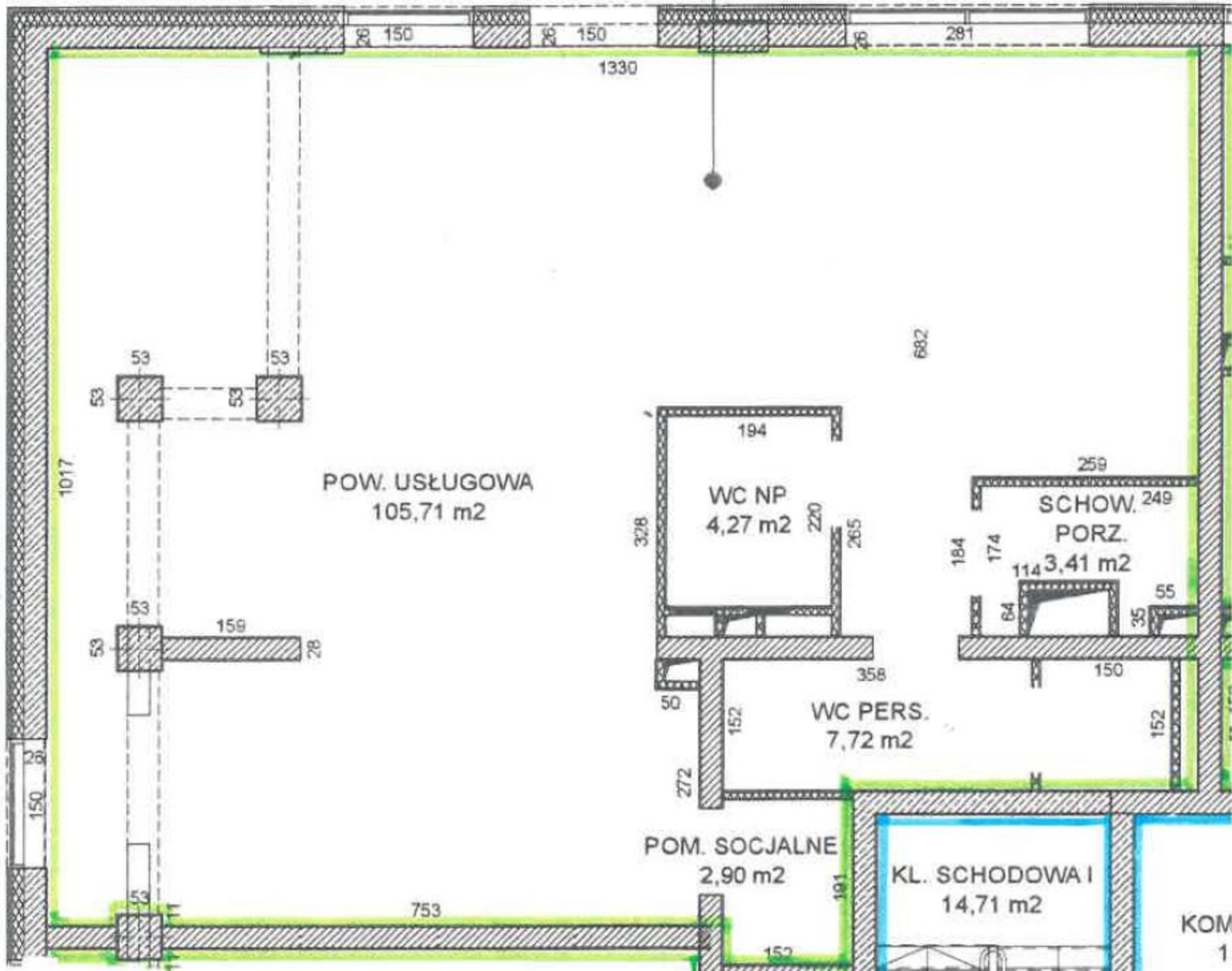


U3  
124.01m<sup>2</sup>



POW. USŁUGOWA  
105,71 m<sup>2</sup>

WC NP  
4,27 m<sup>2</sup>

SCHOW.  
PORZ.  
3,41 m<sup>2</sup>

WC PERS.  
7,72 m<sup>2</sup>

POM. SOCJALNE  
2,90 m<sup>2</sup>

KL. SCHODOWA I  
14,71 m<sup>2</sup>

KOM  
1